

WHO WE ARE

Edge Engineering is committed to helping developers maximise their return on investments through high quality, project specific civil and structural engineering designs in shorter times while offering dedicated Professional Engineering services and great experiences in the commercial, industrial, retail, residential and mixed use sectors.

Our success springs from delivering first class designs efficiently, timeously, and with the overall experience being nothing but great.

Our foundation is built on our faith in Jesus Christ and above all we honour and thank our Lord for the blessings He gives us time and again.

Our motto: Colossians 3:23 "Whatever you do, work at it with all your heart, as working for the Lord."

WHAT DO CLIENTS, PROFESSIONALS & CONTRACTORS SAY ABOUT US

"Amazing engineering company. So professional and proactive on all our projects."

"Edge Engineering provides both innovative and cost effective design solutions."

"It was a great pleasure to be your client. I will gladly recommend your services."

"Knowledgeable and professional."

"Very level headed and well composed."

"Professional and efficient. Easy to work with on retail environments!"

"I had the pleasure of working together on numerous successfully completed projects. Always professional and willing to assist where required."

"Helpful and knowledgeable, always willing to answer any questions. Safety is a first priority. Definitely will recommend for any job."

"Found to have a positive attitude towards problem solving, good attention to detail and communication skills."

"Experienced engineer takes his work seriously and ensures that every detail is carried out with extreme diligence and quality. Designs are always on time and with the utmost accuracy and consistency."

"He has excellent knowledge in his field as a structural engineer, was very aware of the client's requirements and appeared very diligent in ensuring deliverables were met. I would recommend him for any work in the commercial, retail and industrial sector."

"Found to be a very efficient and professional engineer - always looking to help, and is a great team player, our clients and team highly rated his performance, and were very happy to work with him."

I would strongly recommend him for any structural engineering or civil engineering-project."

Read more at www.edgeengineering.co.za and [LinkedIn](#) company page.

2019 GOALS ASSESS & 2020 NEW GOALS



Goals are there to measure progress and serve as motivation towards achievements and success.

Some of our goals for 2019 which we believe were successfully achieved, and that we want to keep building on in the 2020 year are:

- Reinforce the current working relationships we have.
- Continue to build exceptional long lasting working relationships.
- Successfully deliver wider, taller and bigger buildings whilst maintaining the close attention to detail every project requires.
- Grow our staff numbers, competency and level of service excellence.

GIVING BACK

A NECESSARY AND HUMBLING PART OF LIFE

When opportunities arise for you to give back to a person, cause, group or charity we encourage everyone to give and to give generously with joy.

We have had a few opportunities this year to give back, some directly within our industry and others that have just captured our hearts.

Two of the areas we have given back this year:

1. Tirisano Foundation – We spent the morning as a team, with various different people in different working industries, talking to the scholars of Mapetla High School in Soweto about what it is like to be engineers, marketers, advertisers, paramedics and so much more in South Africa today, and encouraging them to believe in themselves and pursue whatever dreams they have.

www.tirisanofoundation.org.za

2. CHOC (Childhood Cancer Foundation of South Africa) – Some of the team joined the COWS at the 947 Ride Joburg to help raise funds for CHOC and the good work they do assisting children with cancer.

www.choc.org.za

www.thecows.co.za



Scan me



INDUSTRIAL

FEATURE PROJECTS: ATLANTIC ELECTRICAL GOGO FRUITS

- 1 500m² Warehouse & Office located in Cape Town
- Construction currently underway and scheduled to be completed in 2020
- EDGE team size = 2
- 6 350m² Storage Warehouse in Limpopo
- Construction completed in 2019
- 6m clear height with full height steel columns
- EDGE team size = 2



COMMERCIAL

FEATURE PROJECTS: SKY VIEW BIZ HUB CENTURION MALL OFFICES ACCENTURE REFURB

- 3 250m² in Lilongwe Malawi
- Retail, warehouse & office space
- Construction commenced June 2018 & completed in 2019
- EDGE team size = 2
- Simple office refurbishments that once completed are really looking amazing
- EDGE team size = 2



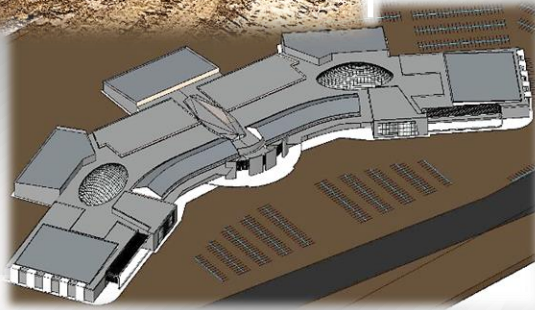
RETAIL

FEATURE PROJECTS:

EKHAYA MALL

LERIBE MALL

- 12 000m² retail space
- Construction commenced late 2019 & Scheduled completion in 2020
- EDGE team size = 2
- 37 000m² retail space in Lesotho
- Scheme completed in 2019
- EDGE team size = 3



EDUCATION

FEATURE PROJECTS:

SPARK SCHOOLS

- Various schools designed and constructed in 2019, with more to follow in 2020.
- Extensions to existing schools
- Refurbs to existing buildings to turn them into schools
- Green fields projects
- 1 000m² - 4 500m²
- EDGE team size = 3



RESIDENTIAL

FEATURE PROJECTS:

THE SAPPIRE

STEYN CITY

HOUGHTON HOUSE

- Upwards of 600m² standalone luxury houses commenced in 2019 with scheduled completion early 2020
- 7m cantilever slab to achieve column free patio and entertainment area
- 70 unit apartments
- Scheduled commencement in 2020
- EDGE team size = 3



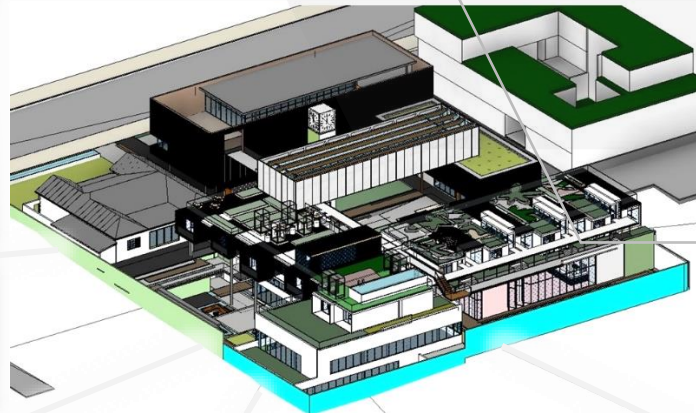
MIXED USE

FEATURE PROJECT:

MOMO MIXED USE DEVELOPMENT

HOME BUILDING

- Developments 7 000m² each
- Office
- Gallery
- Parking
- Restaurant
- Residential
- Planned 2020 projects
- EDGE team size = 3

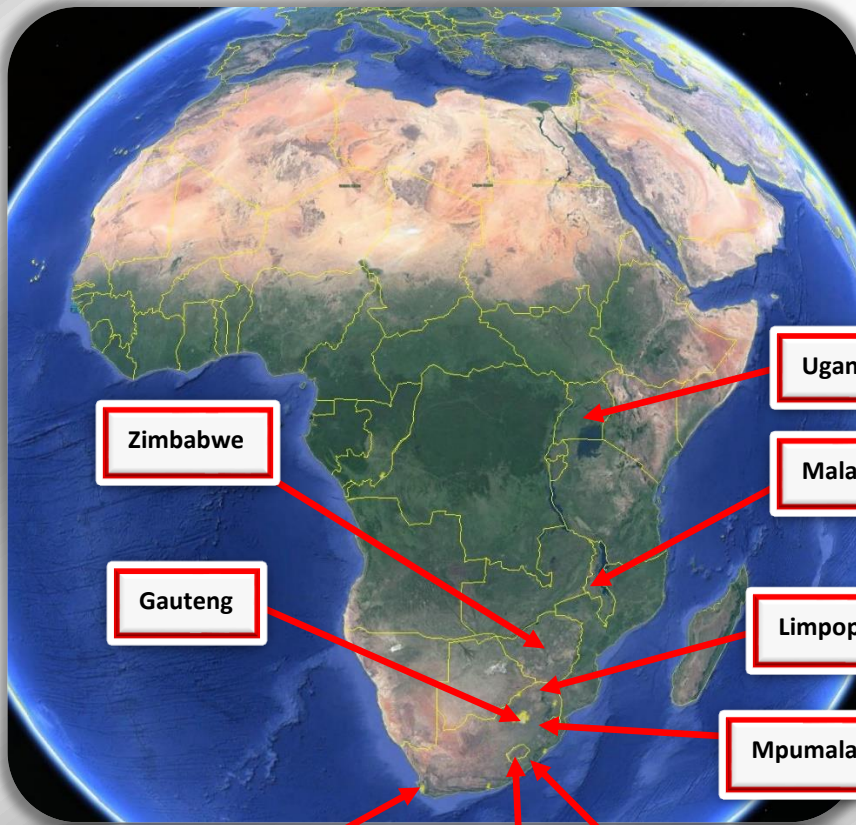


PROJECTS

A GROWING FOOTPRINT

Our footprint has been significant this year with projects in 5 different countries and in 5 of the 9 provinces within South Africa.

We have been blessed with 86 active ongoing projects this year and hope to increase this number for 2020.



A CHRISTMAS STORY – THE GOLD WRAPPING PAPER

Once upon a time, there was a man who worked very hard just to keep food on the table for his family. This particular year a few days before Christmas, he punished his little 5 year old daughter after learning that she had used up the family's only roll of expensive gold wrapping paper.

As money was tight, he became even more upset when on Christmas Eve he saw that she had used up all of the expensive gold wrapping paper to decorate one shoe box she had put under the Christmas tree.

The next morning the little girl, filled with excitement, gave the present to her father and said "Merry Christmas daddy, this is for you." As he opened the box, he felt very embarrassed and regretted punishing his daughter earlier. When he opened the box and found it empty his anger returned and he shouted harshly at his daughter, "Don't you know when you give someone a present there is supposed to be something inside the box."

The little girl looked up her father, crying, and said gently, "Daddy, it's not empty. I blew kisses into it until it was full." The father was crushed. He fell on his knees and put his arms around his daughter, begging for her forgiveness.

Each of us has been given an invisible golden box filled with unconditional love and kisses from our children, family, friends and God. There isn't a more precious gift anyone could receive.

SUMMARY OF 2019

As the curtain closes on 2019 most people will probably find it hard to believe how quickly the year has come and gone. Let's recap a couple of the big events of 2019:

- South African elections
- Celebrations of the Springboks as rugby world cup winners

For us it is the celebration of our 2nd year and December break. We have had a mixed bag this year. A slow tough start to the year, but we honour God for getting us through it, all glory to Him. The second half of the year has been a fruitful and increasingly busier year towards the end.

Looking back we can only be proud of the Edge team, the unity within the team and the fun we have had. We are thankful for all the support from our families and grateful to our gracious God and Lord Jesus Christ for the blessings and provision He has bestowed upon us.

We had fun being able to build on the solid foundation laid last year.

Some projects we expected to start or continue from 2018 we have seen successfully completed, while others unfortunately have not materialized, and some we hope will resurface soon in 2020.

We have tendered on projects with little success, but keep trying. We have explored different concepts to the traditional way of construction, some of which include multi-storey steel buildings and lightweight steel frames.

We have tackled refurb, green fields projects, inspections and investigations, carried out reports and been involved in remedial works to existing buildings.

THANK YOU to our clients, fellow professionals and contractors for your support and the roles you have played this year. We look forward to new and continued adventures together next year in 2020.

To those that we have not yet had the opportunity to work with this year, we hope to have one show itself in 2020.

Merry Christmas from all of us at the EDGE Engineering Team

